

DUMMY LOADS AND ATTENUATORS

COAXIAL LOADS (II)

0-2 GHz



DESCRIPTION:

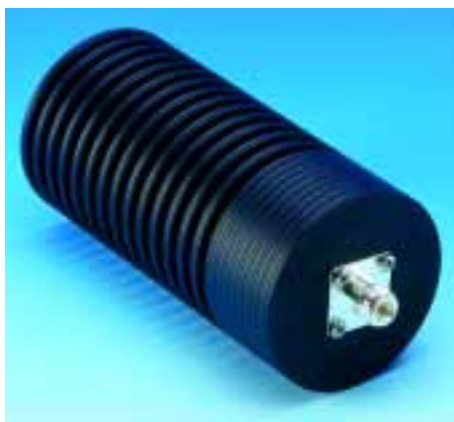
- ★ This series of coaxial loads have very low SWR and are especially suitable for use with:
 - Power Hybrids.
 - Isolators.
 - Coaxial Transmission Lines.
 - Power Monitors.
 - Wattmeters.
- ★ The surface of the dummy loads is black anodized.



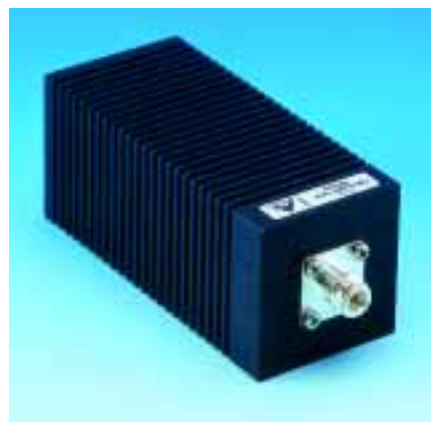
PRL 50W



PRL 75W



PRL 100W



PRL 100W-SQ

SPECIFICATIONS:

	ELECTRICAL			
	PRL 50 W	PRL 75 W	PRL 100 W	PRL 100 W-SQ
FREQUENCY RANGE	0-2 GHz	0-2 GHz	0-2 GHz	0-2 GHz
MAX. INPUT POWER	50 W	75 W	100 W	100 W
IMPEDANCE	Nom. 50 Ω	Nom. 50 Ω	Nom. 50 Ω	Nom. 50 Ω
SWR	≤ 1.25	≤ 1.25	≤ 1.25	≤ 1.25
	MECHANICAL			
	PRL 50 W	PRL 75 W	PRL 100 W	PRL 100 W-SQ
TEMP. RANGE	-30° C i +60° C	-30° C i +60° C	-30° C i +60° C	-30° C i +60° C
CONNECTORS	N-female	N-female	N-female	N-female
DIMENSIONS	ø45 x 155 mm	ø56 x 210 mm	ø90 x 210 mm	W: 70 x H: 70 x L: 180 mm
WEIGHT	Approx. 431 g	Approx. 942 g	Approx. 2060 g	Approx. 1460 g

ORDERING DESIGNATIONS:

N-male connectors as an option.

PROCOM A/S reserve the right to amend specifications without prior notice.