

# DHX 27 5/8-KFZ

Log.-periodic "5/8" Helical Mobile Antenna  
for the 27 MHz CB-Band

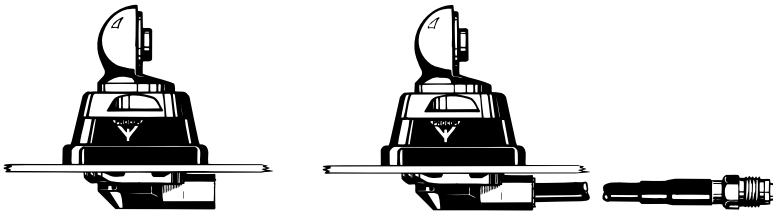
PROCOM

## DESCRIPTION:

- ★ 0.9 m high top-quality antenna with high efficiency.
- ★ Stainless steel Z-mount with ball-joint and wing screw whip-fastening system.
- ★ Despite the very small physical dimensions, the toploading and the log.-periodic distance between the helical windings yield exceptionally good performance.
- ★ Simple mounting with access from the outside only.
- ★ Choice between two connection principles:
  - ★ Z-mount : FME-connection (FME-cable to be ordered separately).
  - ★ ZP4-mount : Permanently attached 4 m RG 58 cable terminated with FME-connector.

Z-Mount

ZP4-Mount



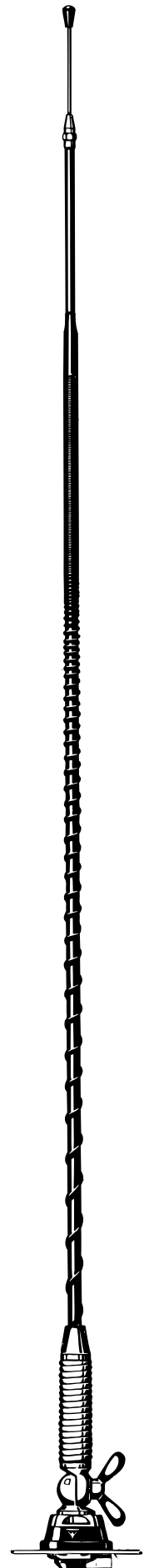
## ORDERING DESIGNATIONS:

MOUNT VERSION	Z-mount with FME-system	ZP4-mount with 4 m cable and FME connector
ANTENNA TYPE NO.	DHX 27 5/8-KFZ	DHX 27 5/8-KFZP4

## SPECIFICATIONS:

ELECTRICAL	
ANTENNA TYPE	Log.-periodically wound helical mobile antenna
FREQUENCY	27 MHz CB-band
IMPEDANCE	Nom. 50 Ω
POLARISATION	Vertical
BANDWIDTH	≥ 500 kHz at SWR ≤ 2.0
MAX. POWER	200 watt
MECHANICAL	
MATERIALS	Whip: Copper-wire wound on glassfiber, covered by polyethylene Chromed brass Mount: Chromed brass Environment-proof plastics Stainless steel
RECOMMENDED INSTALLATION TORQUE	7.5 ± 1 Nm
COLOUR	Bright/black
HEIGHT	Approx. 0.9 m
WEIGHT	Z-mount : Approx. 210 g ZP4-mount : Approx. 370 g
MOUNTING	21 mm dia. hole

PROCOM A/S reserve the right to amend specifications without prior notice.



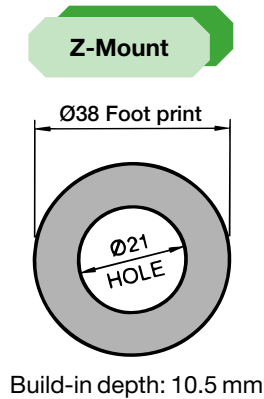
# DHX 27 5/8-KFZ Installation



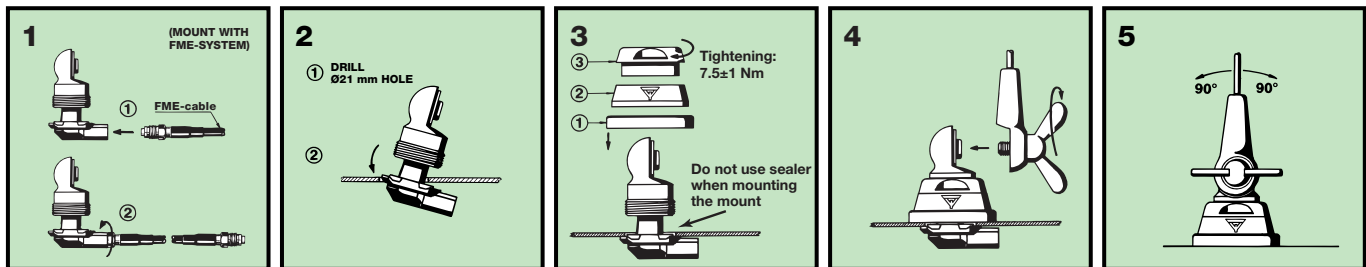
This antenna is supplied with type Z-mount. The whip is fastened to the mount by means of our standard ball-joint and wing screw system. The adjustable ball-joint ensures that the whip can always be mounted in a vertical position independent of the angle of the installation spot.

The Z-mount is particularly well suited for mounting on car-roofs because of its ability to be installed exclusively with access from the outside. However, the antenna can be installed anywhere on the car, as the Z-mount is equally well suited for mounting on e.g. trunk or wing.

## 1. INSTALLATION DIMENSIONS:



## 2. INSTALLATION STEPS:



## 3. TUNING:

The antenna must be tuned using SWR-meter. Unfasten the union nut at the top end of the whip and pull out the adjusting pin approx. 1 cm at a time until best possible SWR is obtained. Re-fasten the union nut thoroughly.