

MU 1-Z/...

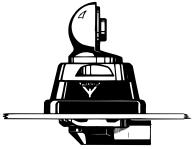
Unity Gain $1/4 \lambda$ Mobile Antenna
for the 450 MHz Band

PROCOM

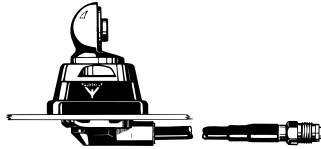
DESCRIPTION:

- ★ Stainless steel whip with toggle joint.
- ★ Type MU 1-Z/s covers 370–410 MHz
Type MU 1-Z/l covers 406–440 MHz
Type MU 1-Z/h covers 430–470 MHz
– no tuning required.
- ★ Stainless steel Z-mount with ball-joint and wing screw whip-fastening system.
- ★ Available with bright or black-chromed metal parts (mount and whip):
 - ★ MU 1-Z/... : Bright version.
 - ★ MU 1-BZ/... : Black version.
- ★ Simple mounting exclusively with access from the outside.
- ★ Choice between two connection principles:
 - ★ Z-mount : FME-connection (supplied without cable).
 - ★ ZP4-mount : Permanently attached 4 m cable terminated with FME-connector.

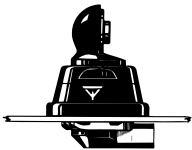
Z-Mount



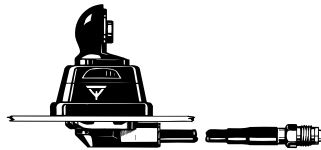
ZP4-Mount



BZ-Mount



BZP4-Mount



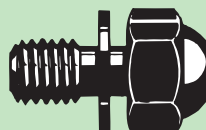
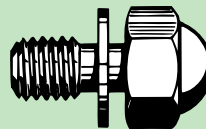
ORDERING DESIGNATIONS:

MOUNT FREQ. RANGE	Z-mount with FME-system	BZ-mount with FME-system	ZP4-mount with 4 m cable and FME-connector	BZP4-mount with 4 m cable and FME-connector
	BRIGHT	BLACK	BRIGHT	BLACK
370–410 MHz	MU 1-Z/s	MU 1-BZ/s	MU 1-ZP4/s	MU 1-BZP4/s
406–440 MHz	MU 1-Z/l	MU 1-BZ/l	MU 1-ZP4/l	MU 1-BZP4/l
430–470 MHz	MU 1-Z/h	MU 1-BZ/h	MU 1-ZP4/h	MU 1-BZP4/h

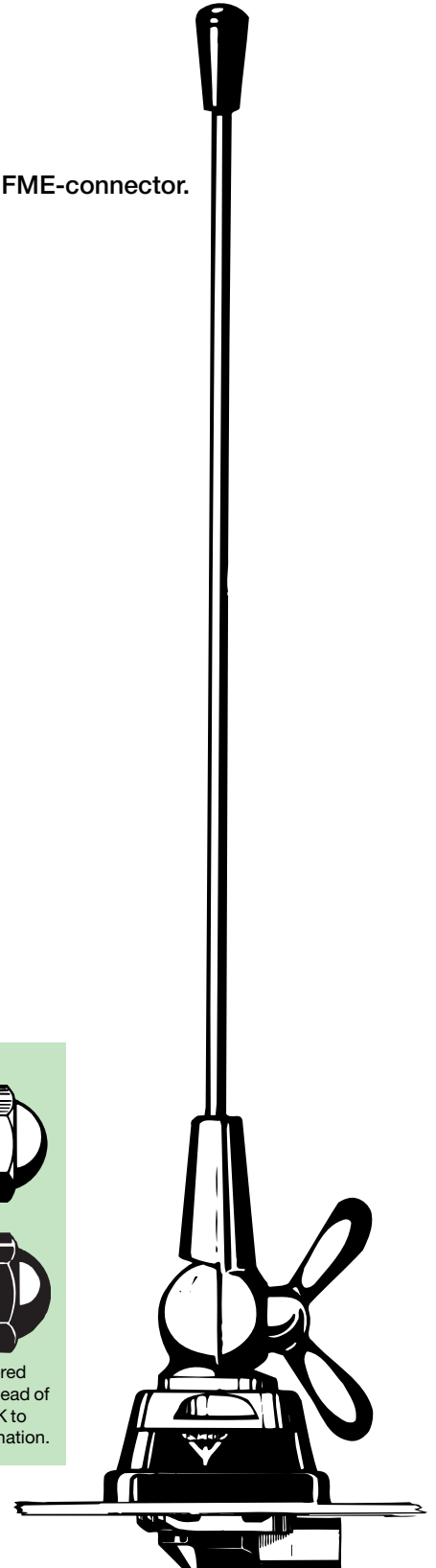
SPECIFICATIONS:

ELECTRICAL	
ANTENNA TYPE	$1/4 \lambda$ mobile whip antenna
FREQUENCY	450 MHz-band covered by three models
IMPEDANCE	Nom. 50 Ω
POLARISATION	Vertical
GAIN	0 dB (acc. to EIA RS-329)
BANDWIDTH	≥ 45 MHz at SWR ≤ 1.5
SWR	≤ 1.2 at f. res.
MAX. POWER	100 watt
MECHANICAL	
MATERIALS	Whip: Stainless steel, bright-polished or black-chromed Chromed brass Mount: Chromed brass. Environment-proof plastics Stainless steel
RECOMMENDED INSTALLATION TORQUE	7.5 ± 1 Nm
COLOUR	Bright or black, see above
HEIGHT	Approx. 185 mm
WEIGHT	Z-version : Approx. 140 g ZP4-version: Approx. 280 g
MOUNTING	21 mm dia. hole

Hat screw option:



For antenna delivered with hat screw instead of wing screw add a K to the antenna designation.



MU 1-Z/... Installation

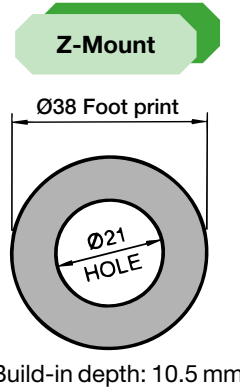


This antenna should always be mounted on the car roof to ensure best omnidirectional coverage.

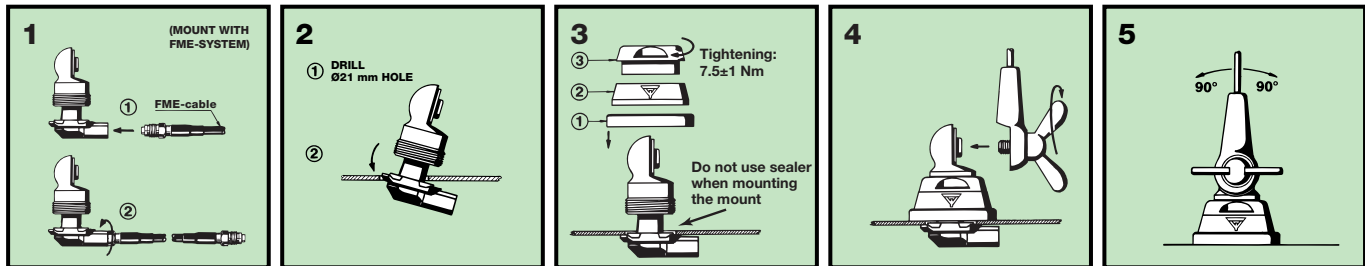
The antenna is provided with type Z-mount. The whip is fastened to the mount by means of our standard ball-joint and wing screw system. The adjustable ball-joint ensures that the whip can always be mounted in a vertical position independent of the angle of the installation spot.

The Z-mount is particularly well suited for mounting on car roofs because of its ability to be installed exclusively with access from the outside.

1. INSTALLATION DIMENSIONS:



2. INSTALLATION STEPS:



3. TUNING/MODEL CONVERSION:

The antenna is delivered factory-tuned and requires no further tuning.

To convert an MU 1-Z/s model into an MU 1-Z/l model, cut off 12 mm of the top end of the whip.

To convert an MU 1-Z/l model into an MU 1-Z/h model, cut off 10 mm of the top end of the whip.

PLEASE NOTE:

As standard the antenna is provided with wing screw. However, the wing screw may be replaced by the less obtrusive hat screw (with key), which also gives an improved protection against theft. To order the antenna with hat screw, please add a "K" to the antenna designation.