

MU 3-BZ

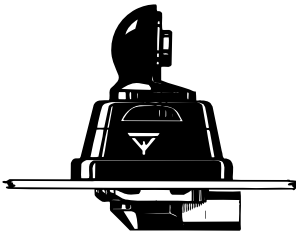
3 dB Gain $5/8 \lambda$ Mobile Antenna
for the 450 MHz Band

PROCOM

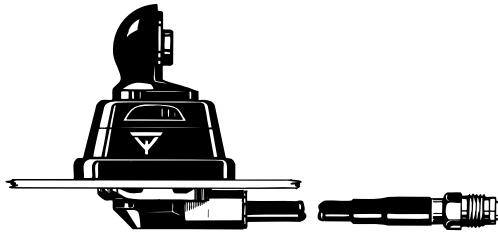
DESCRIPTION:

- ★ Black-chromed stainless steel whip with toggle joint.
- ★ Tunable by cutting in the range 380...470 MHz.
- ★ Stainless steel BZ-mount with ball-joint and wing screw whip-fastening system.
- ★ Simple mounting exclusively with access from the outside.
- ★ Choice between two connection principles:
 - ★ BZ-mount : FME-connection (supplied without cable).
 - ★ BZP4-mount : Permanently attached 4 m cable terminated with FME-connector.

BZ-Mount



BZP4-Mount



SPECIFICATIONS:

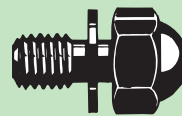
ELECTRICAL

ANTENNA TYPE	5/8 λ mobile whip antenna
FREQUENCY	Tunable by cutting within: 380...470 MHz
IMPEDANCE	Nom. 50 Ω
POLARISATION	Vertical
GAIN	Approx. 3 dB
BANDWIDTH	≥ 12 MHz at SWR ≤ 1.5
SWR	≤ 1.3 at f. res.
MAX. POWER	100 watt

MECHANICAL

MATERIALS	Whip:	Stainless steel, black-chromed Black-chromed brass
	Mount:	Black-chromed brass Environment-proof plastics Stainless steel
RECOMMENDED INSTALLATION TORQUE	7.5 \pm 1 Nm	
COLOUR	Black	
HEIGHT	Approx. 58 cm	
WEIGHT	BZ-version : Approx. 140 g BZP4-version : Approx. 280 g	
MOUNTING	21 mm dia. hole	

Hat screw option:

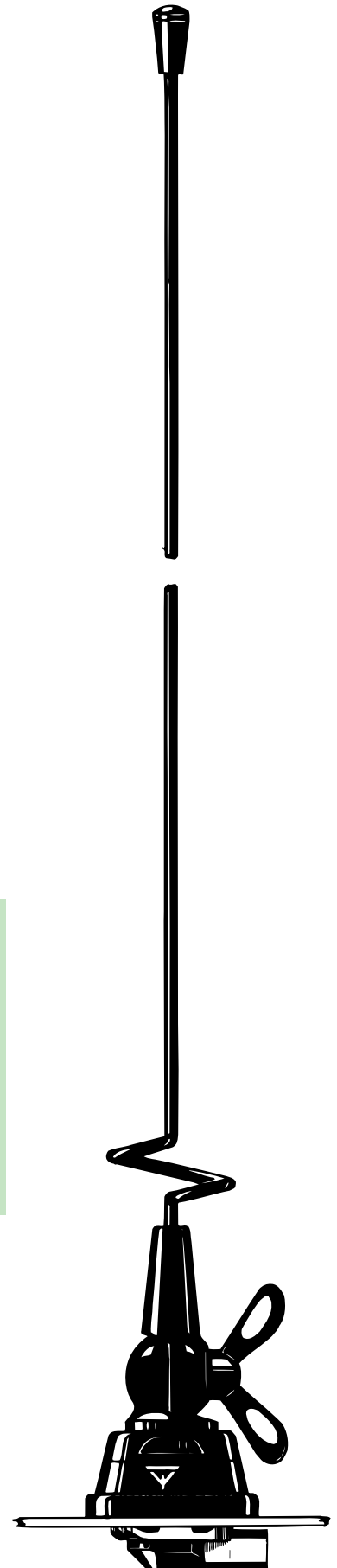


For antenna delivered with hat screw instead of wing screw add a K to the antenna designation.

ORDERING DESIGNATIONS:

MOUNT VERSION	BZ-mount with FME-system	BZP4-mount with 4 m cable and FME-connector
TYPE NO.	MU 3-BZ	MU 3-BZP4

PROCOM A/S reserve the right to amend specifications without prior notice.



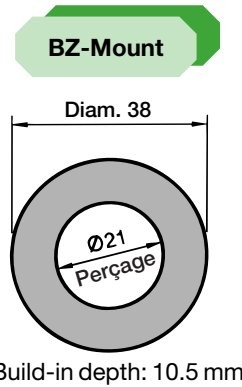
MU 3-BZ Installation



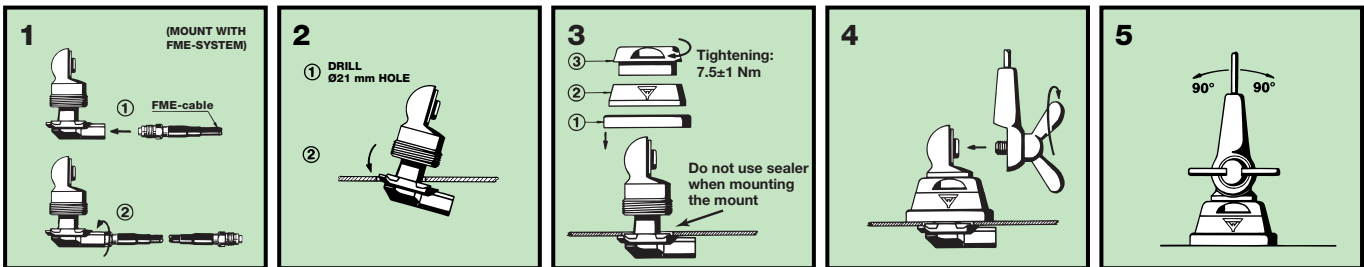
This antenna is provided with type BZ-mount. The whip is fastened to the mount by means of our standard ball-joint and wing screw system. The adjustable ball-joint ensures that the whip can always be mounted in a vertical position independent of the angle of the installation spot.

The BZ-mount is particularly well suited for mounting on car-roofs because of its ability to be installed exclusively with access from the outside. However, the antenna can be installed anywhere on the car, as the BZ-mount is equally well suited for mounting on e.g. trunk or wing.

1. INSTALLATION DIMENSIONS:

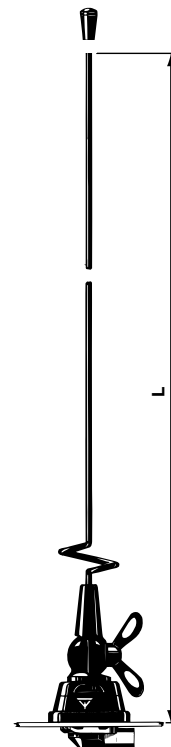
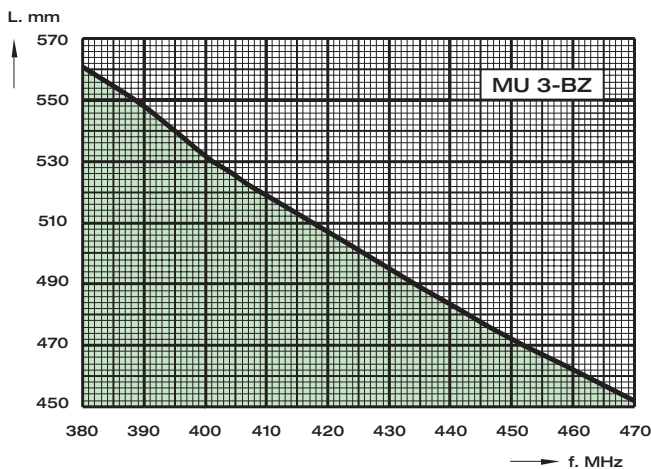


2. INSTALLATION STEPS:



3. TUNING:

The antenna should always be tuned using an SWR-meter. The cutting diagram below serves as a guide for this procedure.



PLEASE NOTE:

- As standard the antenna is provided with wing screw. However, the wing screw may be replaced by the less obtrusive hat screw (with key), which also gives an improved protection against theft. To order the antenna with hat screw, please add a "K" to the antenna designation.
- The antenna can be delivered factory-tuned to customer's frequencies. Please consult our price list concerning additional charges for adjustment by cutting.