

# Z-Mount

## Low Profile Mobile Antenna Mount with Toggle Joint

PROCOM

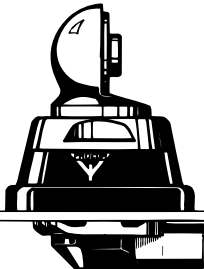


### DESCRIPTION:

- ★ Can be used together with all PROCOM mobile antenna whips provided with toggle joint.
- ★ Installation possible everywhere on the car.
- ★ Particularly well suited for rooftop-mounting because of very low internal protrusion and ability to be installed exclusively with access from the outside.
- ★ Hole diameter: 21 mm.
- ★ Mounting body made of stainless steel !
- ★ Wide variety of antenna whips available in the frequency range up to 470 MHz.
- ★ Choice between two connection principles:
  - ★ Z-mount : FME-connection (supplied without cable).
  - ★ ZP4-mount : Permanently attached 4 m cable terminated with FME-connector.
- ★ Available in bright or black (black plastic parts for both versions).

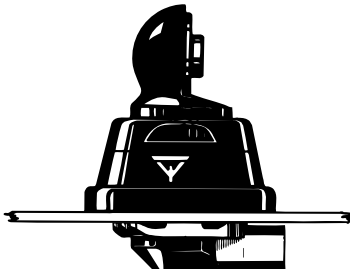
Z-Mount

Bright



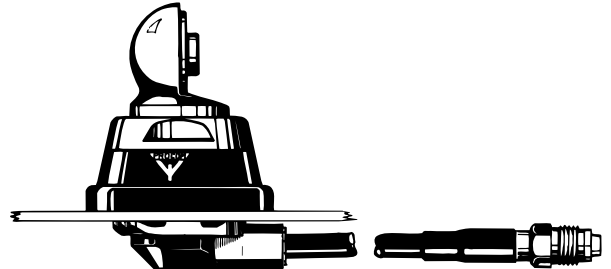
BZ-Mount

Black



ZP4-Mount

Bright  
(also available in black)



### SPECIFICATIONS:

APPLICATION	Low-profile mount for mobile antennas
FREQUENCY	0-470 MHz
CONNECTION TO WHIP	Toggle-joint (for wing screw or hat screw with key)
MATERIALS	Stainless steel Bright or black chromed brass Environment-proof plastics
COLOUR	Black or bright and black
HEIGHT	40 mm
INSTALLATION DIAMETER	38 mm
BUILD-IN DEPTH	10.5 mm
RECOMMENDED INSTALLATION TORQUE	7.5 ± 1 Nm
WEIGHT	Z-version : Approx. 90 g ZP4-version: Approx. 230 g
MOUNTING	21 mm dia. hole
ROOF THICKNESS	Max. 2 mm

#### FME-SYSTEM ACCESSORIES

##### FME-CABLES

LENGTH	TYPE NO.
1m	1m FME
2m	2m FME
3m	3m FME
4m	4m FME
5m	5m FME
6m	6m FME
4m white	4m FME-white
6m white	6m FME-white
12m white	12m FME-white
18m white	18m FME-white

For further information about other types of FME-cables please compare the cable data sheets under accessories in our catalogue.

#### FME-CONNECTORS

CONNECTOR	ORDER NO.
FME-FME	FME-FME
Prolongation	FMEP
N	FME-N
FSMA	FME-FSMA
BNC	FME-BNC
TNC	FME-TNC
UHF	FME-UHF
Mini-UHF	FME-MUHF
Elbow-MUHF	FME-EMUHF
Elbow-BNC	FME-EBNC
Elbow-TNC	FME-ETNC
SMA	FME-SMA

### ORDERING DESIGNATIONS:

VERSION	Z-mount (bright) with FME-system	BZ-mount (black) with FME-system	ZP4-mount (bright) with 4m cable and FME-connector	BZP4-mount (black) with 4m cable and FME-connector
TYPE NO.	Z-Mount	BZ-Mount	ZP4-Mount	BZP4-Mount

PROCOM A/S reserve the right to amend specifications without prior notice.

# Z-Mount Installation

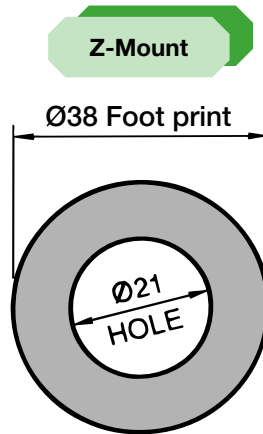


The Z-mount is designed for mounting in a 21 mm dia. hole. The whip is fastened to the mount by means of our standard ball joint and wing screw system. The adjustable ball joint ensures that the whip can always be mounted in a vertical position independent of the angle of the installation spot.

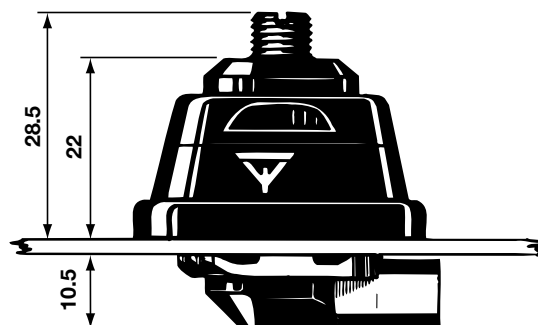
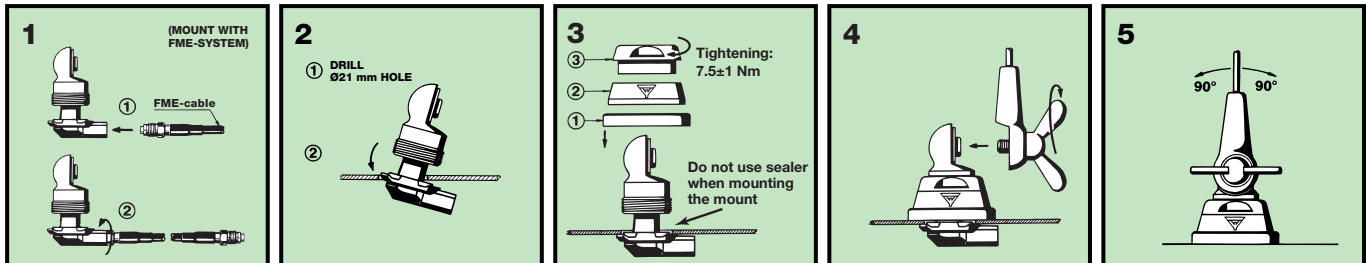
The Z-mount is particularly well suited for mounting on car roofs because of its ability to be installed exclusively with access from the outside. However, the antenna can be installed anywhere on the car, as the Z-mount is equally well suited for mounting on e.g. trunk or wing.

A good contact surface on the inside of the car body must always be ensured, thus enabling the base plate to get in direct contact with the metal parts of the car, which is of utmost importance for proper performance of the antenna.

## 1. INSTALLATION DIMENSIONS:



## 2. INSTALLATION STEPS:



### PLEASE NOTE:

The whips are normally installed on the mount by means of the standard wing screw, but may also be installed using the optional hat screw with key (accessory item).